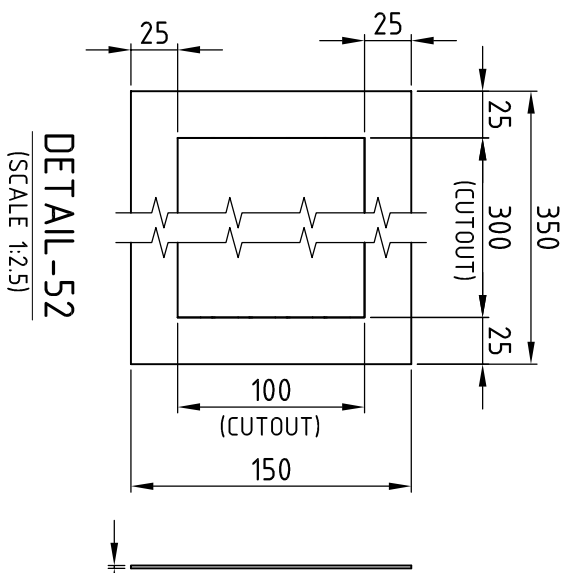
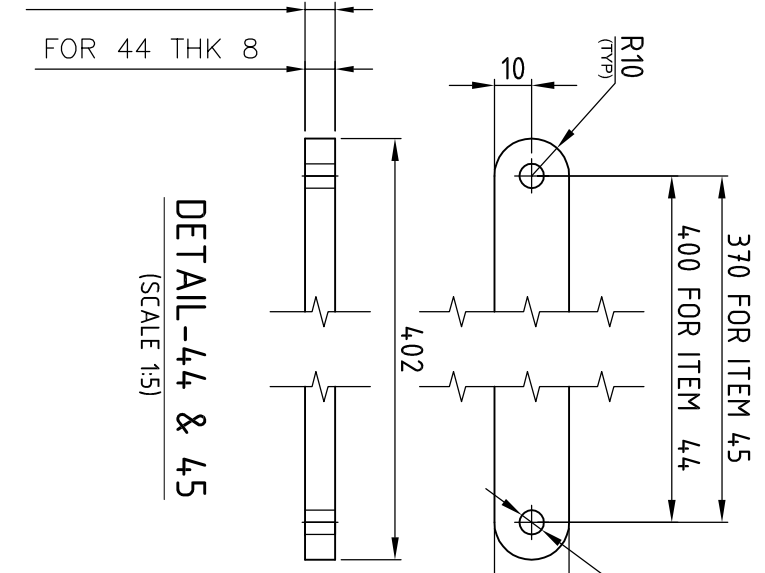
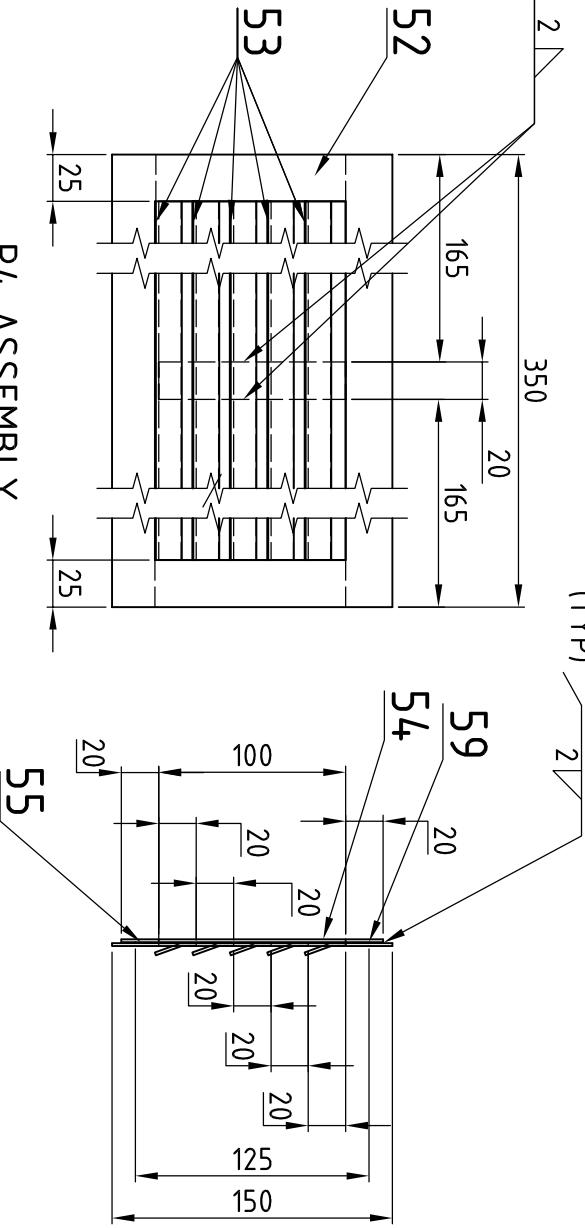
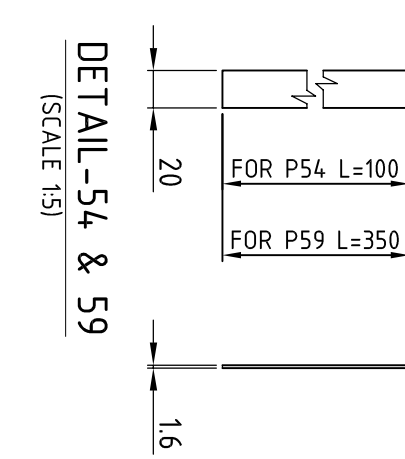
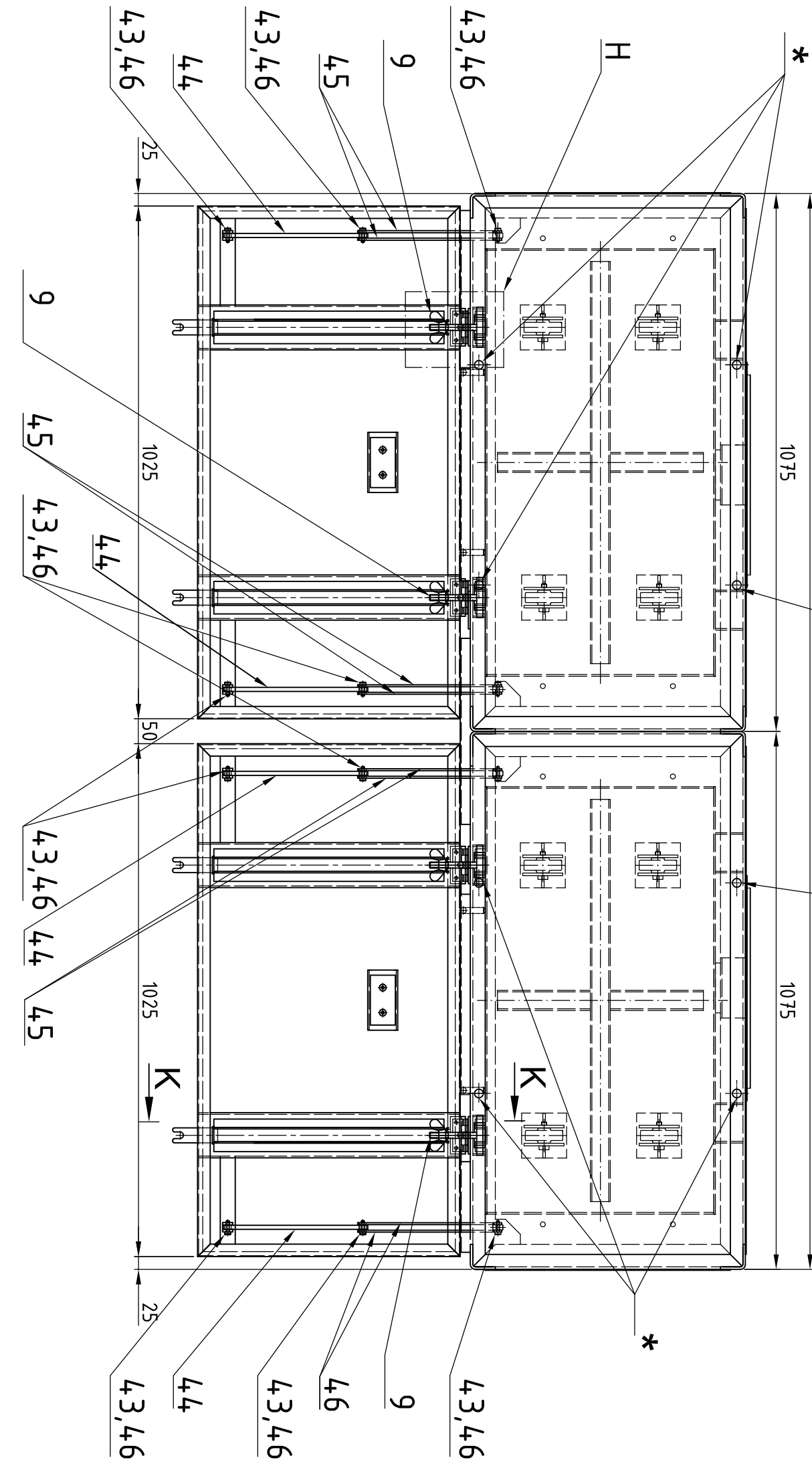
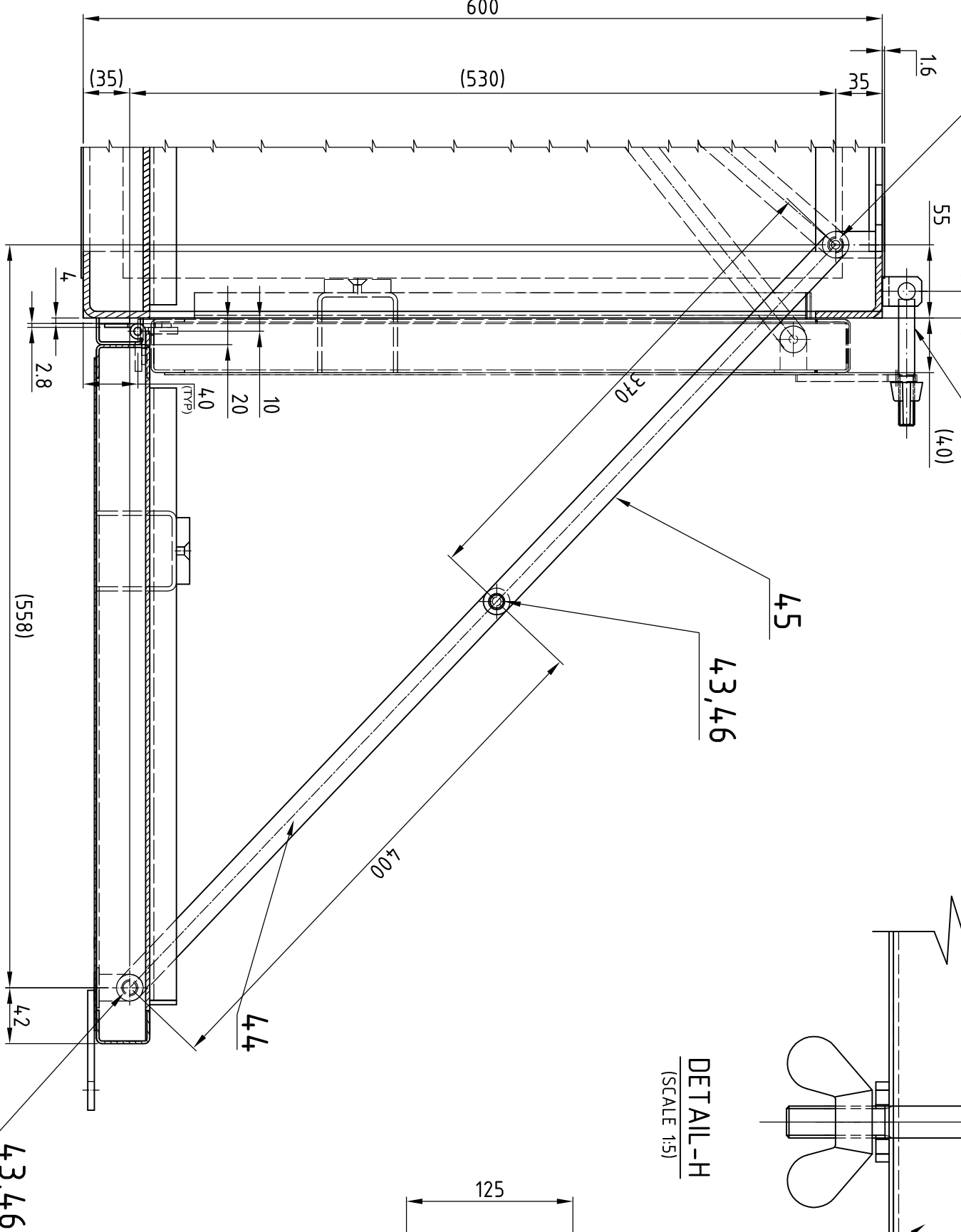
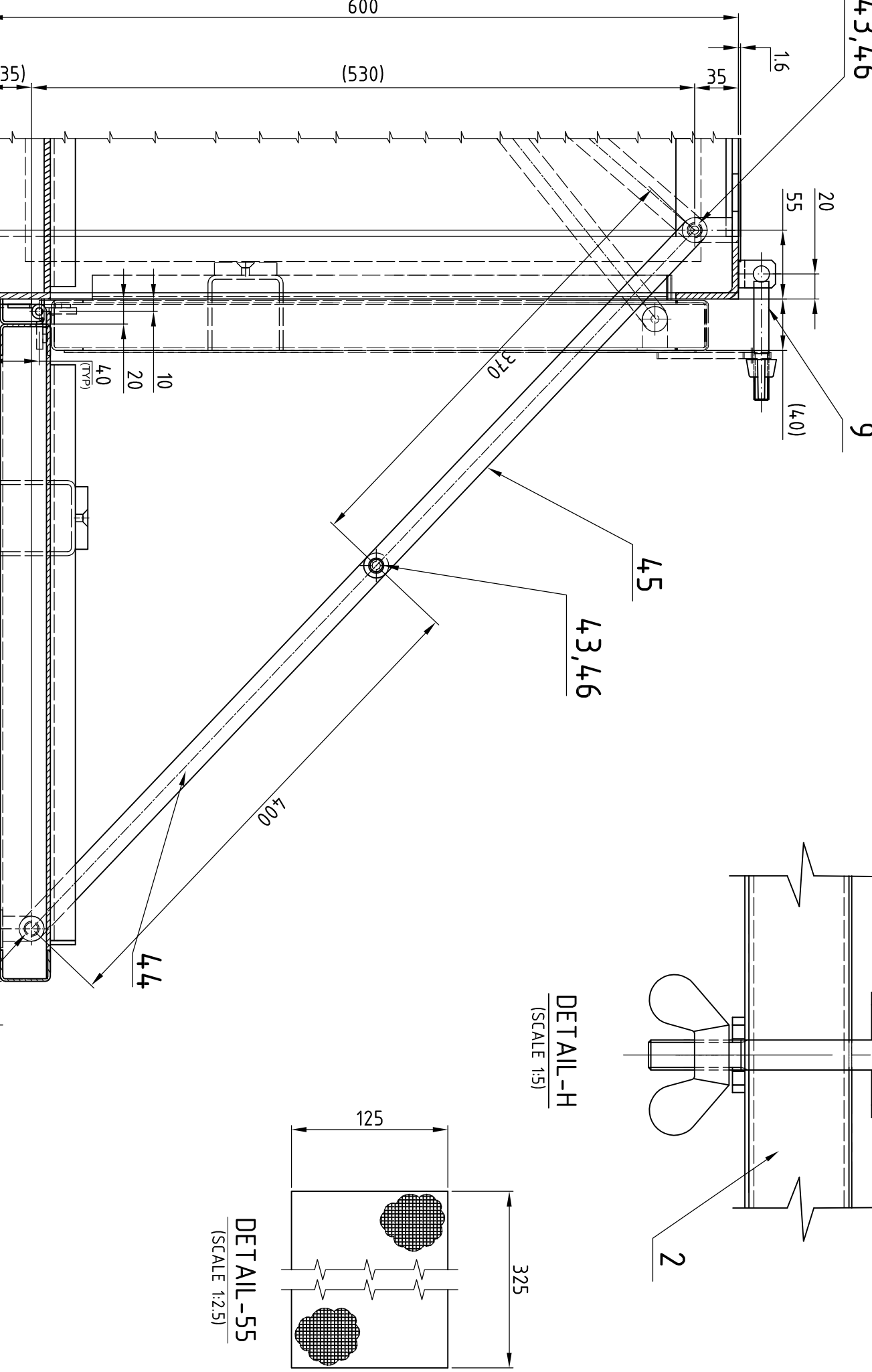
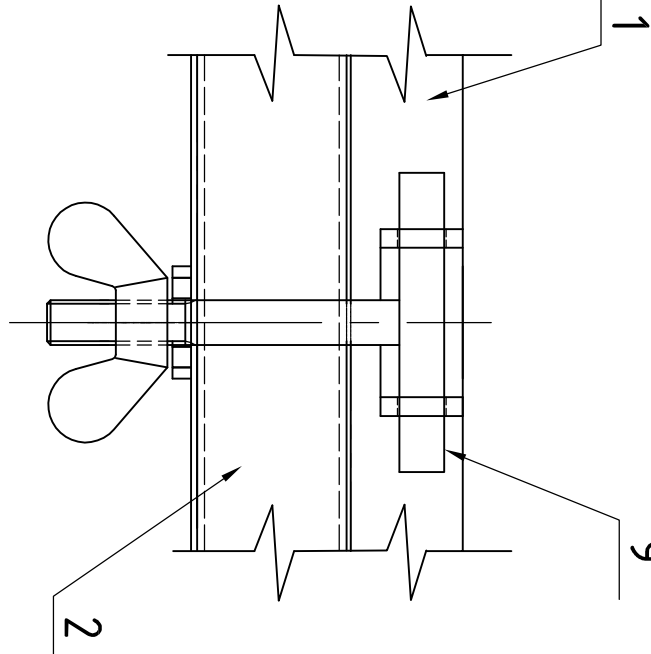
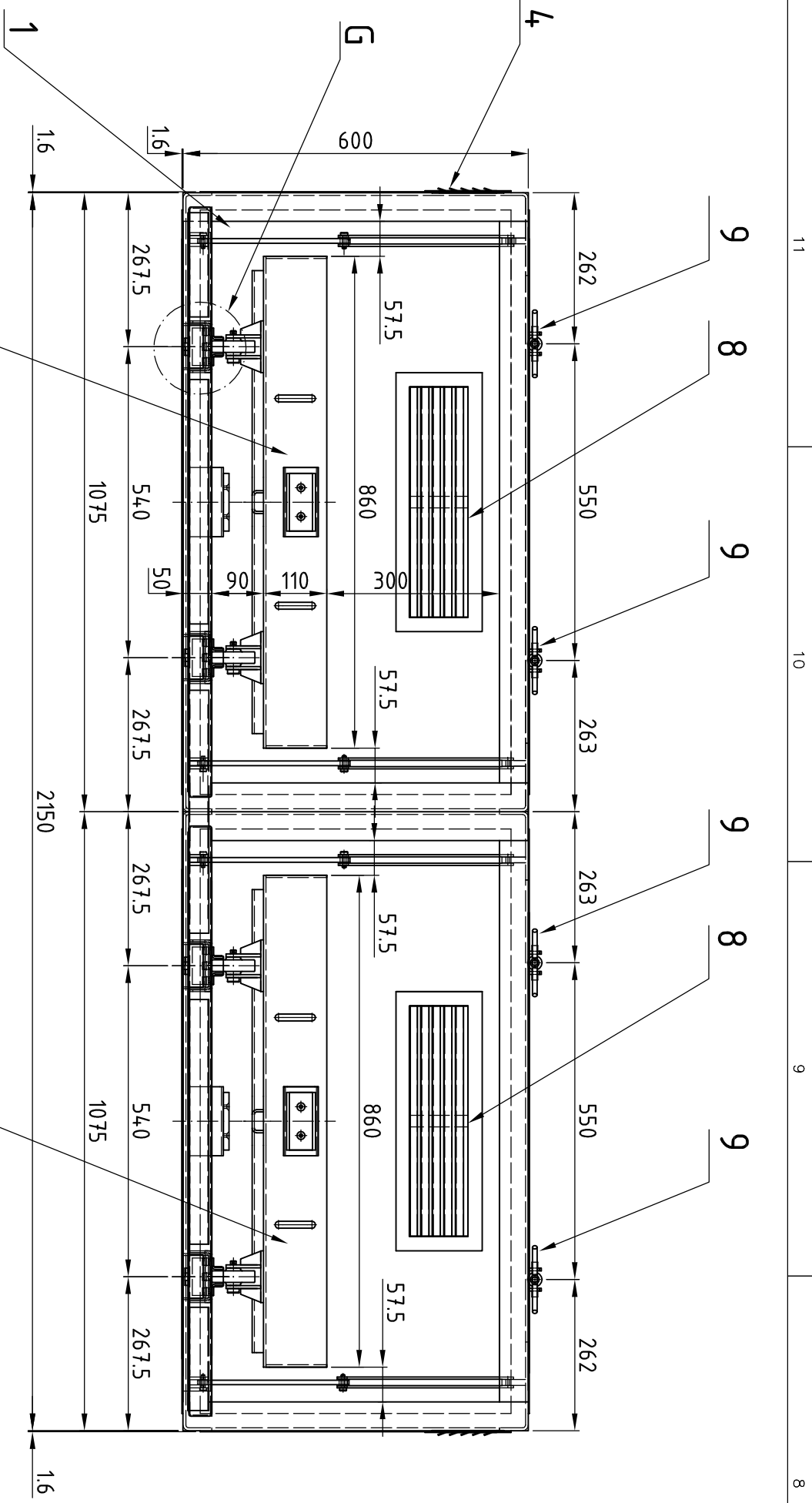
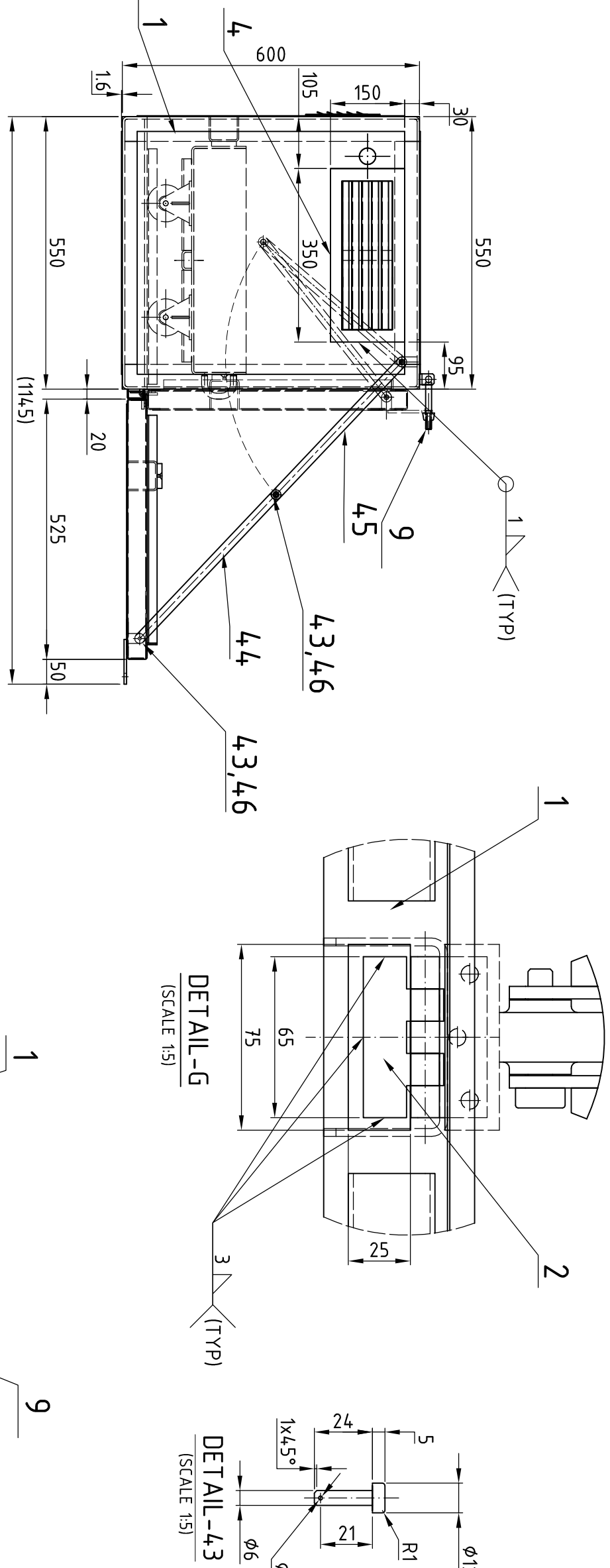


MACHINE DEVIATIONS		RANGE		0 - 6		6 - 30		30 - 120		120 - 315		315-1000		1000-2000		2000-4000		ABOVE 4000		RA
FOR DIMENSIONAL TOLERANCES OF SHEET METAL PARTS AND WELDED STRUCTURES, REFER STD. NO.273		TOLERANCE		+0.1	+0.2	+0.3	+0.5	+0.8	+1.2	+2	+3	~								~
VALUES OF SURFACE TEXTURE SHALL BE AS PER COMPANY STD. NO. 202		QUALITY OF WELDED JOINTS, REFER TO 239																		
WELDING SHALL BE CARRIED OUT AS PER IS. 9555-96		STATUS																		



- NOTE:
1. SKIP WELDING MAY BE ADOPTED WHERE EVER NECESSARY WITHOUT LOOSING STRUCTURAL RIGIDITY.
 2. ALL STEEL PARTS SHOULD BE PAINTED WITH HIGH BUILD EPOXY PAINT TO BEML SPEC. NO. RD 221 ON THE INTERIOR AND EXTERIOR OF THE BATTERY BOX.
 3. FIX P26 WITH SURFACE ADHESIVE.
 4. POSITION OF DRILL IN P31 SHOULD BE AS PER STANDARD HOLES POSITION P6 ASSEMBLY.
 5. MOUNTING HOLES OF Ø17.5 SHOULD BE DRILLED ON THE BATTERY BOX AS PER THE UNDER FRAME BRACKET POSITION DURING INSTALLATION.
 6. ONE PROTOTYPE SAMPLE SHALL BE SUBMITTED FOR APPROVAL BEFORE MANUFACTURING/ EFFECTING BULK SUPPLY.

SL.No.	QTY	PART / STOCK No.	DESCRIPTION	SIZE	MATERIAL
64	4	R1015 02160	FLAT	16x20x450	IS:1079-2009 Gr. HR*
63	2	R1049 19005	SCREEN MESH 0.45x1.4 GAUGE	125x425	IS: 1568-70 TAB-1
62	10	R1015 02160	VENTILATOR BLIND	16x23x400	IS:1079-2009 Gr. HR*
61	2	R1015 02160	VENTILATOR PLATE	16x150x400	IS:1079-2009 Gr. HR*
60	8	R1052 08075	WHEEL	Ø15x30	IS: 2062-06 Gr.E 250 C
59	4	R1015 02160	FLAT	16x20x350	IS:1079-2009 Gr. HR*
58	8	R101588001	TAPPED PAD	5x12x12	IS: 2062-06 Gr.E 250 C

SL.No.	QTY	PART / STOCK No.	DESCRIPTION	SIZE	COMPANET STD./S	MA (KG)
57	8	REP01 12520	SPLIT PIN	Ø2.5x20	IS: 549-74 TAB.1	
56	8	R1052 08020	PIN	Ø20x57	IS: 2062-06 Gr.E 250 C	
55	2	R1049 19005	SCREEN MESH 0.45x1.4 GAUGE	125x325	IS: 1568-70 TAB-1	
54	12	R1015 02160	FLAT	16x20x100	IS:1079-2009 Gr. HR*	
53	10	R1015 02160	VENTILATOR BLIND	16x23x300	IS:1079-2009 Gr. HR*	
52	2	R1015 02160	VENTILATOR PLATE	16x150x350	IS:1079-2009 Gr. HR*	
51	8	R101588001	LUG	5x20x33	IS: 2062-06 Gr.E 250 C	
50	4	R101502200	FLAT	2x30x175	IS:1079-2009 Gr. HR*	
49	4	R101588001	FLAT	5x22x75	IS: 2062-06 Gr.E 250 C	
48	4	R101610075	BUTT HINGE (UNCRAKED)	L=65, HEAVY	IS: 134-92 TAB-6	
47	20	RFSS310520	CSK HD SCREW	M5x20	IS: 1565-05.4.8 TYPE-B	
46	12	REP0111612	SPLIT PIN	Ø16x12	IS: 549-74 TAB.1	
45	8	R101593009	LEVER	5x20x370	IS: 2062-06 Gr.E 250 C	
44	4	R101501008	LEVER	8x20x400	IS: 2062-06 Gr.E 250 C	
43	12	R1015208012	PIN	Ø12x29	IS:2062-06 Gr. E 250C	
42	8	R1015 88001	STIFFENER	5x21x35	IS:2062-06 Gr. E 250C	
41	8	R1015 88001	SIDE PLATE	5x60x80	IS:2062-06 Gr. E 250C	
40	4	R1015 88001	TOP PLATE	5x90x90	IS:2062-06 Gr. E 250C	
39	2	R1015208012	HANDLE	Ø12X125	IS:2062-06 Gr. E 250C	
38	1	R101593009	CHANNEL	3.15x68x810	IS:1079-2009 Gr. HR*	
37	2	R101593009	CHANNEL	3.15x68x185	IS:1079-2009 Gr. HR*	
36	2	R101593009	END PLATE	3.15x106x453	IS:1079-2009 Gr. HR*	
35	1	R101593009	BENT PLATE	3.15x670x860	IS:1079-2009 Gr. HR*	
34	2	R101593032	CHANNEL	3.15x120x168	IS:1079-2009 Gr. HR*	
33	2	R101593032	STOP PLATE	3.15x20x35	IS:1079-2009 Gr. HR*	
32	4	R101593032	ANGLE	3.15x35x460	IS:1079-2009 Gr. HR*	
31	2	R101593032	CHANNEL	3.15x158x533	IS:1079-2009 Gr. HR*	
30	1	R101502160	PANEL SHEET	16x505x1005	IS:1079-2009 Gr. HR*	
29	2	R101502200	CHANNEL	2x82x525	IS:1079-2009 Gr. HR*	
28	1	R101502200	CHANNEL	2x82x1025	IS:1079-2009 Gr. HR*	
27	1	R101502200	CHANNEL (WITH SLOT)	2x82x1025	IS:1079-2009 Gr. HR*	
26	4		RUBBER PAD	10x50x100	RUBBER RS.3.3 SO SHORE	
25	2	R101593032	CHANNEL	3.15x150x120	IS:1079-2009 Gr. HR*	
24	2	R101502160	BOTTOM PANEL SHEET	16x4490x1015	IS:1079-2009 Gr. HR*	
23	2	R101502160	TOP PANEL SHEET	16x4490x1015	IS:1079-2009 Gr. HR*	
22	2	R101502160	SIDE PANEL SHEET	16x540x490	IS:1079-2009 Gr. HR*	
21	2	R101502160	REAR PANEL SHEET	16x540x1015	IS:1079-2009 Gr. HR*	
20	8	R101593032	ANGLE	3.15x35x475	IS:1079-2009 Gr. HR*	
19	4	R101593009	PLATE	3.15x25x75	IS:1079-2009 Gr. HR*	
18	4	R101501010	LUG	10x20x40	IS:2062-06 Gr. E 250C	
17	4	R101588001	PLATE	5x50x50	IS:2062-06 Gr. E 250C	
16	1	R101502200	CHANNEL	2x68x412	IS:1079-2009 Gr. HR*	
15	2	R101502200	CHANNEL	2x68x475	IS:1079-2009 Gr. HR*	
14	2	R101502200	CHANNEL	2x68x175	IS:1079-2009 Gr. HR*	
13	4	R101593032	CHANNEL	3.15x169x540	IS:1079-2009 Gr. HR*	
12	8	R101588001	CROSS ANGLE	5x92x540	IS:2062-06 Gr. E 250C	
11	8	R101588001	LONGITUDINAL ANGLE	5x92x1065	IS:2062-06 Gr. E 250C	
10	8	R101588001	ANGLE SUPPORT	5x92x600	IS:2062-06 Gr. E 250C	
9	4	849-21018	LOCK ASSEMBLY			
8	2		REAR VENTILATOR ASSEMBLY (CONSISTS OF P54, &P61 TO P64)			
7	2		LUG PLATE ASSEMBLY (CONSISTS OF P50 & P51)			
6	2		HINGE PLATE ASSEMBLY (CONSISTS OF P48 &P49)			
5	8		WHEEL ASSEMBLY (CONSISTS OF P40 TO P42, P56, P57 & P60)			
4	2		SIDE VENTILATOR ASSEMBLY (CONSISTS OF P52 TO P55&59)			
3	2		TROLLEY ASSEMBLY (LH) (CONSISTS OF P35 TO P39)			
2	2		DOOR ASSEMBLY (LH) (CONSISTS OF P6, P7, P261034, & P47)			
1	1		FRAME ASSEMBLY (CONSISTS OF P10 TO 26, & P47)			

MENU - 3 PHASE (IR)

REF. DRG.	HEAT TREAT	APPROV.	VS. LAKSHMI	24/09/2019
SUBJECT	W. SANTHA	24/09/2019		
DESIGN	CHNO JARAS M	22/09/2019		
TITLE	DRWN Jagadisha M	27/09/2019		
	SCALE 1:10			
	3 OF 3			
	W/NO			
	ALT			

BATTERY BOX 110V

849-21017